

# BCRAGD

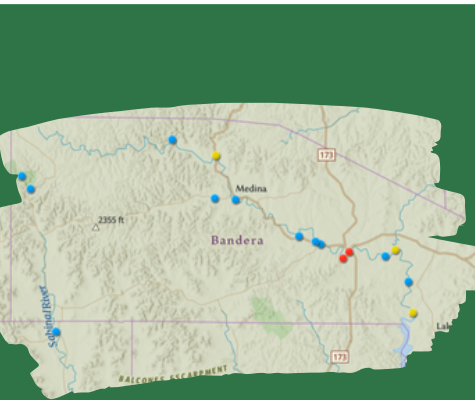
## PUBLIC SERVICE ANNOUNCEMENT:

Surface Water Staff from the Bandera County River Authority and Groundwater District collected water samples from sites along the Medina River, Medina Lake, Sabinal River, and their tributaries to assess levels of E. coli bacteria on June 27, 2024.

E. coli is a bacteria found in the gut of warm-blooded animals and is known to potentially cause illness in humans if ingested. No primary contact recreation should take place if the number of E. coli exceeds 399 most probable number (MPN) per 100 mL of water. This standard is set by the Texas Commission on Environmental Quality (TCEQ) in the Texas Administrative Code (30 TAC §307.7). This means that no one should participate in activities that could result in the total submersion of the head underwater if counts exceed the 399 MPN standard.

There is ALWAYS a possibility of infection from E. coli or other waterborne illnesses. Never drink or ingest river water without proper disinfection; always swim at your own risk.

## MEDINA RIVER & SABINAL RIVER E. COLI COUNTS JUNE 27, 2024



Medina Lake - Park @ PR 37	Dry	Bandera City Park @ 1st St	51 MPN	Can Creek @ Lost Maples	<1 MPN
English Crossing	39 MPN	Tarpley Crossing	260 MPN	Medina Lake @ Pop's Place	Dry
<b>Bridlegate Park**</b>	12 MPN	Ranger Crossing	93 MPN	N. Prong, Wallace Ck	Dry
Bandera River Ranch Park	Dry	Moffett Park in Medina	41 MPN	Medina Lake @ Haby's Cove	Unable to access
W. Prong @ Coal Kiln Rd	162 MPN	N. Prong @ Brewington	12 MPN	Utopia City Park	26 MPN
Medina Lake @ Red Cove	Unable to access	Sabinal R @ Lost Maples	9 MPN	N. Prong @ Rocky Creek	Dry
Bandera City Park @ SH173	<b>613 MPN*</b>	Medina Rv @ Peaceful Valley Rd	111 MPN		

\*Indicates the sample was above TCEQ threshold of 399 MPN

Interactive Map of locations sampled, current E.coli count, temperature, water level, and current photo located at <https://www.bcragd.org/water-quality-testing/>

