

BCRAGD

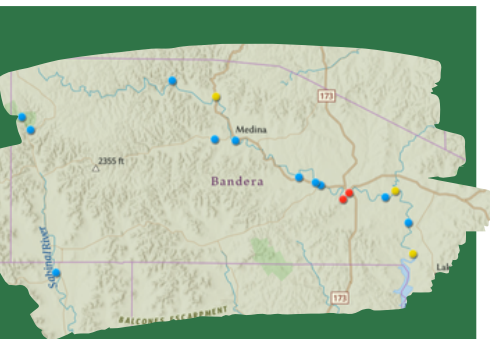
PUBLIC SERVICE ANNOUNCEMENT:

Surface Water Staff from the Bandera County River Authority and Groundwater District collected water samples from sites along the Medina River, Medina Lake, Sabinal River, and their tributaries to assess levels of E. coli bacteria on **December 11 & 31, 2024.**

E. coli is a bacteria found in the gut of warm-blooded animals and is known to potentially cause illness in humans if ingested. No primary contact recreation should take place if the number of E. coli exceeds 399 most probable number (MPN) per 100 mL of water. This standard is set by the Texas Commission on Environmental Quality (TCEQ) in the Texas Administrative Code (30 TAC §307.7). This means that no one should participate in activities that could result in the total submersion of the head underwater if counts exceed the 399 MPN standard.

There is ALWAYS a possibility of infection from E. coli or other waterborne illnesses. Never drink or ingest river water without proper disinfection; always swim at your own risk.

MEDINA RIVER & SABINAL RIVER E. COLI COUNTS DECEMBER 11 & 31, 2024



Interactive Map of locations sampled, current E.coli count, temperature, water level, and current photo located at <https://www.bcragd.org/water-quality-testing/>



Medina Lake County Park @ PR 37	Unable to access	Bandera City Park @ SH173	166 MPN	W. Prong @ Coalkin Rd	35 MPN
Medina Lake @ Haby's Cove	Unable to access	Bandera City Park @ 1st St	101 MPN	W. Prong @ Carpenter Ck	210 MPN
Medina Lake @ Red Cove Marina	Unable to access	Tarpley Crossing	147 MPN	West Verde Ck @ Hill Country SNA	961 MPN*
Medina Lake @ Pop's Place	Dry	Ranger Crossing	84 MPN	Williams Ck in Tarpley	5 MPN
English Crossing	206 MPN	Can Ck @ Lost Maples SNA	<1 MPN	Seco Ck @ RR470	14 MPN
Bandera River Ranch	Dry	Moffett Park in Medina	185 MPN	Utopia City Park	31 MPN
Upstream of WWTP, Bandera	59 MPN	1st Crossing @ RR337	150 MPN	Sabinal R @ SH187	Dry
Bridlegate Park	117 MPN	N. Prong @ Wallace Ck	Dry	Sabinal R @ Cornelius Rd	361 MPN
Bandera Creek @ SH 16 S	Dry	N. Prong @ Rocky Creek	23 MPN	Sabinal RV @ Lost Maples SNA	10 MPN
Lower Mason Creek @ Chipman	Dry	N. Prong @ Brewington	25 MPN	Medina River @ Peaceful Valley Rd	82 MPN

*Indicates the sample exceeded the TCEQ threshold of 399 MPN.