

BCRAGD

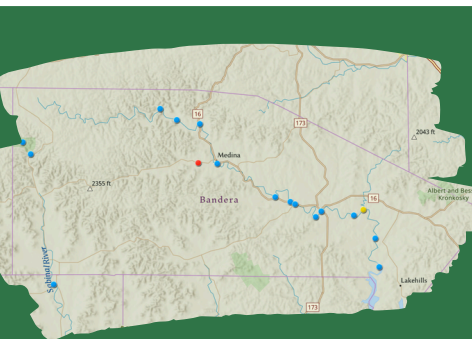
PUBLIC SERVICE ANNOUNCEMENT:

Surface Water Staff from the Bandera County River Authority and Groundwater District collected water samples from sites along the Medina River, Medina Lake, Sabinal River, and their tributaries to assess levels of E. coli bacteria on **June 25, 2025.**

E. coli is a bacteria found in the gut of warm-blooded animals and is known to potentially cause illness in humans if ingested. No primary contact recreation should take place if the number of E. coli exceeds 399 most probable number (MPN) per 100 mL of water. This standard is set by the Texas Commission on Environmental Quality (TCEQ) in the Texas Administrative Code (30 TAC §307.7). This means that no one should participate in activities that could result in the total submersion of the head underwater if counts exceed the 399 MPN standard.

There is ALWAYS a possibility of infection from E. coli or other waterborne illnesses. Never drink or ingest river water without proper disinfection; always swim at your own risk.

MEDINA RIVER & SABINAL RIVER E. COLI COUNTS JUNE 25, 2025



Interactive Map of locations sampled, current E.coli count, temperature, water level, and current photo located at <https://www.bcragd.org/water-quality-testing/>

| | | | | | |
|----------------------------|------------------|--------------------------------|---------|---------------------------|------------------|
| Medina Lake - Park @ PR 37 | Unable to access | Bandera City Park @ 1st St | 138 MPN | Can Creek @ Lost Maples | 4 MPN |
| English Crossing | 6 MPN | Tarpley Crossing | 179 MPN | Medina Lake @ Pop's Place | 35 MPN |
| Bridlegate Park | 8 MPN | Ranger Crossing | 45 MPN | N. Prong, Wallace Ck | 50 MPN |
| Bandera River Ranch Park | DRY | Moffett Park in Medina | 96 MPN | Medina Lake @ Haby's Cove | Unable to access |
| W. Prong @ Coalkiln Rd | 461 MPN* | N. Prong @ Brewington | 78 MPN | Utopia City Park | 9 MPN |
| Medina Lake @ Red Cove | Unable to access | Sabinal R @ Lost Maples | 1 MPN | N. Prong @ Rocky Creek | 2 MPN |
| Bandera City Park @ SH173 | 13 MPN | Medina Rv @ Peaceful Valley Rd | 55 MPN | | |

*Indicates the sample tested over the TCEQ threshold of 399 MPN.

