

BCRAGD

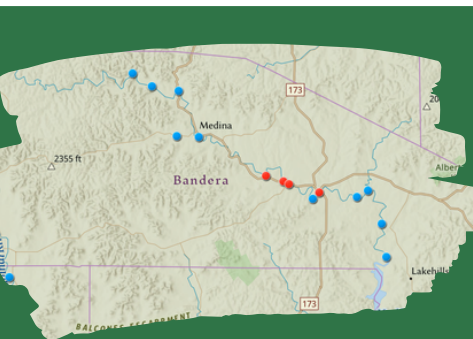
PUBLIC SERVICE ANNOUNCEMENT:

Surface Water Staff from the Bandera County River Authority and Groundwater District collected water samples from sites along the Medina River, Medina Lake, Sabinal River, and their tributaries to assess levels of E. coli bacteria on **August 20 & 21, 2025.**

E. coli is a bacteria found in the gut of warm-blooded animals and is known to potentially cause illness in humans if ingested. No primary contact recreation should take place if the number of E. coli exceeds 399 most probable number (MPN) per 100 mL of water. This standard is set by the Texas Commission on Environmental Quality (TCEQ) in the Texas Administrative Code (30 TAC §307.7). This means that no one should participate in activities that could result in the total submersion of the head underwater if counts exceed the 399 MPN standard.

There is ALWAYS a possibility of infection from E. coli or other waterborne illnesses. Never drink or ingest river water without proper disinfection; always swim at your own risk.

MEDINA RIVER & SABINAL RIVER E. COLI COUNTS AUGUST 20TH & 21ST, 2025



Medina Lake - Sunset Resort	<1 MPN	Bandera City Park @ 1st St	179 MPN	Can Creek @ Lost Maples	4 MPN
English Crossing	19 MPN	Tarpley Crossing	435 MPN*	Medina Lake @ Pop's Place	10 MPN
Bridlegate Park	210 MPN	Ranger Crossing	488 MPN*	N. Prong, Wallace Ck	23 MPN
Bandera River Ranch Park	2 MPN	Moffett Park in Medina	261 MPN	Medina Lake @ Haby's Cove	Unable to access
W. Prong @ Coalkiln Rd	131 MPN	N. Prong @ Brewington	30 MPN	Utopia City Park	96 MPN
Medina Lake @ Red Cove	Unable to access	Sabinal R @ Lost Maples	16 MPN	N. Prong @ Rocky Creek	104 MPN
Bandera City Park @ SH173	1046 MPN*	Medina Rv @ Peaceful Valley Rd	579 MPN*		

*Indicates the sample was over the TCEQ threshold of 399 MPN.

Interactive Map of locations sampled, current E.coli count, temperature, water level, and current photo located at <https://www.bcragd.org/water-quality-testing/>

