

# BCRAGD

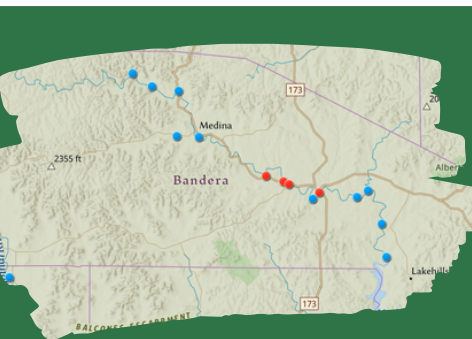
## PUBLIC SERVICE ANNOUNCEMENT:

Surface Water Staff from the Bandera County River Authority and Groundwater District collected water samples from sites along the Medina River, Medina Lake, Sabinal River, and their tributaries to assess levels of E. coli bacteria on **September 16<sup>th</sup> & 17<sup>th</sup>, 2025.**

E. coli is a bacteria found in the gut of warm-blooded animals and is known to potentially cause illness in humans if ingested. No primary contact recreation should take place if the number of E. coli exceeds 399 most probable number (MPN) per 100 mL of water. This standard is set by the Texas Commission on Environmental Quality (TCEQ) in the Texas Administrative Code (30 TAC §307.7). This means that no one should participate in activities that could result in the total submersion of the head underwater if counts exceed the 399 MPN standard.

There is ALWAYS a possibility of infection from E. coli or other waterborne illnesses. Never drink or ingest river water without proper disinfection; always swim at your own risk.

## MEDINA RIVER & SABINAL RIVER E. COLI COUNTS SEPTEMBER 16<sup>TH</sup> & 17<sup>TH</sup>, 2025



Medina Lake County Park @ PR 37	Unable to access	Bandera City Park @ SH173	248 MPN	W. Prong @ Coalkiln Rd	19 MPN
Medina Lake @ Haby's Cove	Unable to access	Bandera City Park @ 1st St	1120 MPN*	W. Prong @ Carpenter Ck	15 MPN
Medina Lake @ Sunset Resort	1 MPN	Tarpley Crossing	102 MPN	West Verde Ck @ Hill Country SNA	3 MPN
Medina Lake @ Pop's Place	1 MPN	Ranger Crossing	50 MPN	Williams Ck in Tarpley	71 MPN
English Crossing	4 MPN	Can Ck @ Lost Maples SNA	3 MPN	Seco Ck @ RR470	3 MPN
Bandera River Ranch	Dry	Moffett Park in Medina	172 MPN	Utopia City Park	5 MPN
Upstream of WWTP, Bandera	131 MPN	1st Crossing @ RR337	194 MPN	Sabinal R @ SH187	5 MPN
Bridlegate Park	2 MPN	N. Prong @ Wallace Ck	16 MPN	Sabinal R @ Cornelius Rd	50 MPN
Bandera Creek @ SH 16 S	Unable to access	N. Prong @ Rocky Creek	80 MPN	Sabinal RV @ Lost Maples SNA	5 MPN
Lower Mason Creek @ Chipman	Dry	N. Prong @ Brewington	18 MPN	Medina River @ Peaceful Valley Rd	214 MPN

Interactive Map of locations sampled, current E.coli count, temperature, water level, and current photo located at <https://www.bcragd.org/water-quality-testing/>

