

BCRAGD

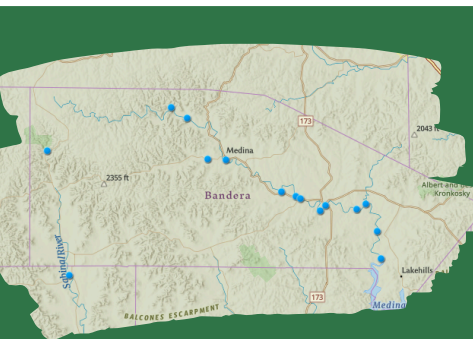
PUBLIC SERVICE ANNOUNCEMENT:

Surface Water Staff from the Bandera County River Authority and Groundwater District collected water samples from sites along the Medina River, Medina Lake, Sabinal River, and their tributaries to assess levels of E. coli bacteria on **December 16-17, 2025.**

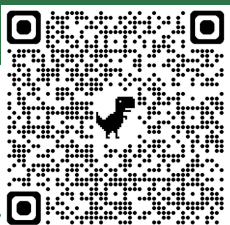
E. coli is a bacteria found in the gut of warm-blooded animals and is known to potentially cause illness in humans if ingested. No primary contact recreation should take place if the number of E. coli exceeds 399 most probable number (MPN) per 100 mL of water. This standard is set by the Texas Commission on Environmental Quality (TCEQ) in the Texas Administrative Code (30 TAC §307.7). This means that no one should participate in activities that could result in the total submersion of the head underwater if counts exceed the 399 MPN standard.

There is ALWAYS a possibility of infection from E. coli or other waterborne illnesses. Never drink or ingest river water without proper disinfection; always swim at your own risk.

MEDINA RIVER & SABINAL RIVER E. COLI COUNTS DECEMBER 16-17, 2025



Interactive Map of locations sampled, current E.coli count, temperature, water level, and current photo located at <https://www.bcragd.org/water-quality-testing/>



| | | | | | |
|---------------------------------|------------------|--------------------------------|----------|-----------------------------------|---------|
| Medina Lake County Park @ PR 37 | Unable to access | Bandera City Park @ 1st St | 116 MPN | W. Prong @ Coalkiln Rd | 135 MPN |
| Medina Lake @ Haby's Cove | Unable to access | Tarpley Crossing | 201 MPN | W. Prong @ Carpenter Ck | 73 MPN |
| Medina Lake@ Sunset Resort | 1 MPN | Ranger Crossing | 35 MPN | West Verde Ck @ Hill Country SNA | 5 MPN |
| Medina Lake @ Pop's Place | Dry | Can Ck @ Lost Maples SNA | 4 MPN | Williams Ck in Tarpley | 228 MPN |
| English Crossing | 31 MPN | 1st Crossing @ RR337 | 128 MPN | Seco Ck @ RR470 | 88 MPN |
| Bandera River Ranch | Dry | Medina River @ Benton Crossing | .210 MPN | Utopia City Park | 4 MPN |
| Upstream of WWTP, Bandera | 7 MPN | Moffett Park in Medina | 40 MPN | Sabinal R @ SH187 | Dry |
| Bridlegate Park | 1733 MPN* | N. Prong @ Wallace Ck | 96 MPN | Sabinal R @ Cornelius Rd | 260 MPN |
| Lower Mason Creek @ Chipman | Dry | N. Prong @ Rocky Creek | 49 MPN | Sabinal RV @ Lost Maples SNA | 31 MPN |
| Bandera City Park @ SH173 | 299 MPN | N. Prong @ Brewington | 14 MPN | Medina River @ Peaceful Valley Rd | 91 MPN |

*Indicates the sample exceeded the TCEQ threshold of 399 Most Probable Number.