

# BCRAGD

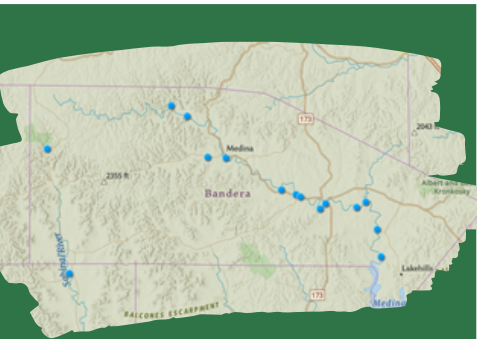
## PUBLIC SERVICE ANNOUNCEMENT:

Surface Water Staff from the Bandera County River Authority and Groundwater District collected water samples from sites along the Medina River, Medina Lake, Sabinal River, and their tributaries to assess levels of E. coli bacteria on **June 3 & 4, 2026.**

E. coli is a bacteria found in the gut of warm-blooded animals and is known to potentially cause illness in humans if ingested. No primary contact recreation should take place if the number of E. coli exceeds 399 most probable number (MPN) per 100 mL of water. This standard is set by the Texas Commission on Environmental Quality (TCEQ) in the Texas Administrative Code (30 TAC §307.7). This means that no one should participate in activities that could result in the total submersion of the head underwater if counts exceed the 399 MPN standard.

There is ALWAYS a possibility of infection from E. coli or other waterborne illnesses. Never drink or ingest river water without proper disinfection; always swim at your own risk.

## MEDINA RIVER & SABINAL RIVER E. COLI COUNTS JUNE 3 & 4, 2026



Interactive Map of locations sampled, current E.coli count, temperature, water level, and current photo located at <https://www.bcragd.org/water-quality-testing/>



Medina Lake County Park @ PR 37	Unable to access	Bandera City Park @ 1st St	54 MPN	W. Prong @ Coalkiln Rd	>2420 MPN*
Medina Lake @ Haby's Cove	Unable to access	Tarpley Crossing	54 MPN	W. Prong @ Carpenter Ck	131 MPN
Medina Lake@ Sunset Resort	<1MPN	Ranger Crossing	50 MPN	West Verde Ck @ Hill Country SNA	37 MPN
Medina Lake @ Pop's Place	7 MPN	Can Ck @ Lost Maples SNA	19 MPN	Williams Ck in Tarpley	649 MPN*
English Crossing	58 MPN	1st Crossing @ RR337	101 MPN	Seco Ck @ RR470	119 MPN
Bandera River Ranch	126 MPN	Medina River @ Benton Crossing	155 MPN	Utopia City Park	11 MPN
Upstream of WWTP, Bandera	50MPN	Moffett Park in Medina	179 MPN	Sabinal R @ SH187	4 MPN
Bridlegate Park	79 MPN	N. Prong @ Wallace Ck	64 MPN	Sabinal R @ Cornelius Rd	172 MPN
Lower Mason Creek @ Chipman	194 MPN	N. Prong @ Rocky Creek	25 MPN	Sabinal RV @ Lost Maples SNA	17 MPN
Bandera City Park @ SH173	276 MPN	N. Prong @ Brewington	17 MPN	Medina River @ Peaceful Valley Rd	93 MPN

\*Indicates the sample exceeded the TCEQ threshold of 399 Most Probable Number.