

BCRAGD

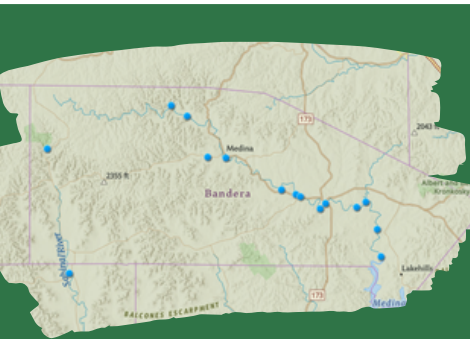
PUBLIC SERVICE ANNOUNCEMENT:

Surface Water Staff from the Bandera County River Authority and Groundwater District collected water samples from sites along the Medina River, Medina Lake, Sabinal River, and their tributaries to assess levels of E. coli bacteria on **June 17, 2026.**

E. coli is a bacteria found in the gut of warm-blooded animals and is known to potentially cause illness in humans if ingested. No primary contact recreation should take place if the number of E. coli exceeds 399 most probable number (MPN) per 100 mL of water. This standard is set by the Texas Commission on Environmental Quality (TCEQ) in the Texas Administrative Code (30 TAC §307.7). This means that no one should participate in activities that could result in the total submersion of the head underwater if counts exceed the 399 MPN standard.

There is ALWAYS a possibility of infection from E. coli or other waterborne illnesses. Never drink or ingest river water without proper disinfection; always swim at your own risk.

MEDINA RIVER & SABINAL RIVER E. COLI COUNTS JUNE 17, 2026



Medina Lake - Park @ PR 37	Unable to access	Bandera City Park @ 1st St	326 MPN	Can Creek @ Lost Maples	2 MPN
English Crossing	73 MPN	Tarpley Crossing	214 MPN	Medina Lake @ Pop's Place	91 MPN
Bridlegate Park	Closed for construction	Ranger Crossing	105 MPN	N. Prong, Wallace Ck	62 MPN
Bandera River Ranch Park	367 MPN	Moffett Park	162 MPN	Medina Lake @ Haby's Cove	Unable to access
W. Prong @ Coalkiln Rd	148 MPN	N. Prong @ Brewington	101 MPN	Utopia City Park	20 MPN
Medina Lake @ Red Cove	Unable to access	Sabinal R @ Lost Maples	71 MPN	Medina Lake @ Sunset Resort	<1MPN
Bandera City Park @ SH173	365 MPN	Medina Rv @ Peaceful Valley Rd	141 MPN		

Interactive Map of locations sampled, current E.coli count, temperature, water level, and current photo located at <https://www.bcragd.org/water-quality-testing/>

